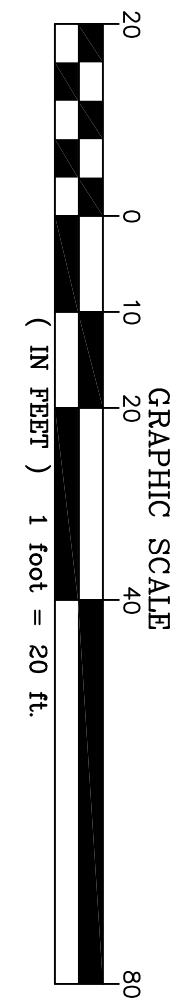
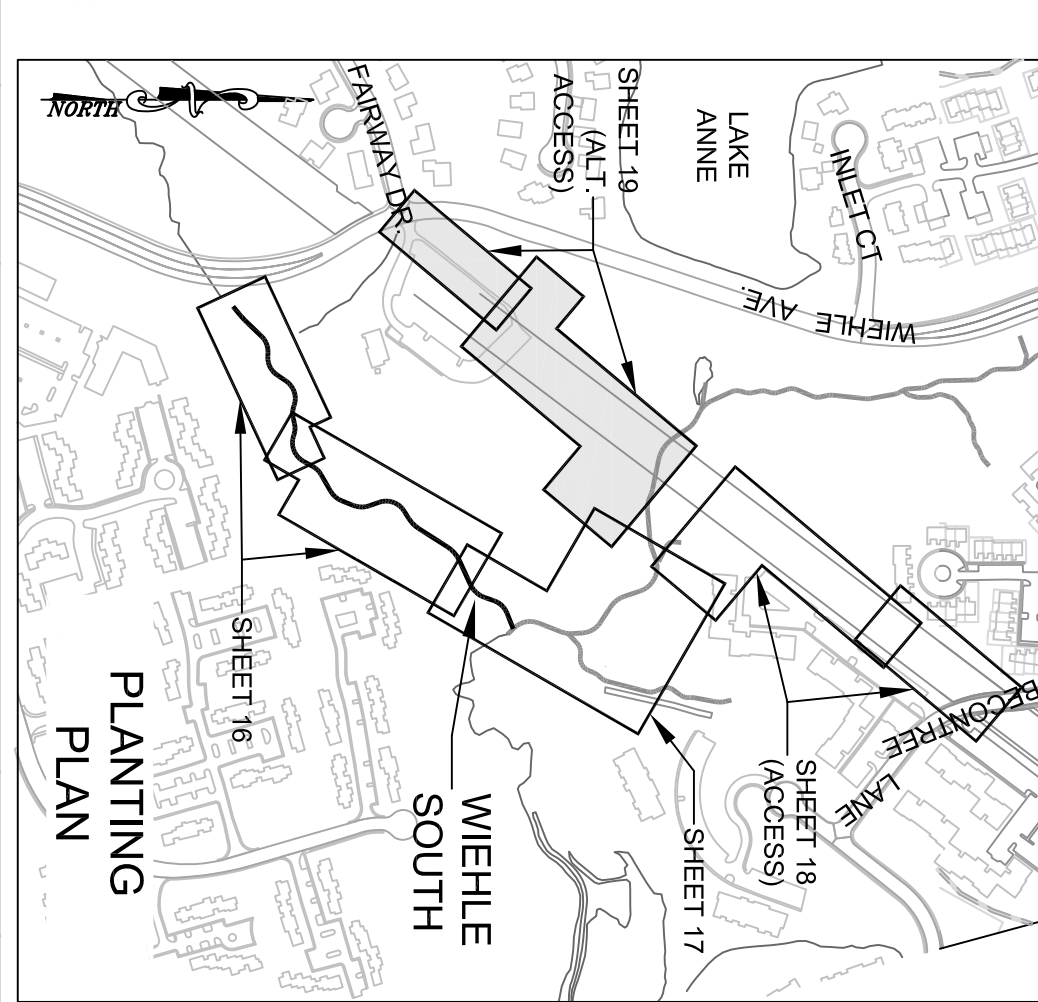


SEE THE PLANTING NOTES & DETAILS SHEETS FOR MORE INFORMATION.

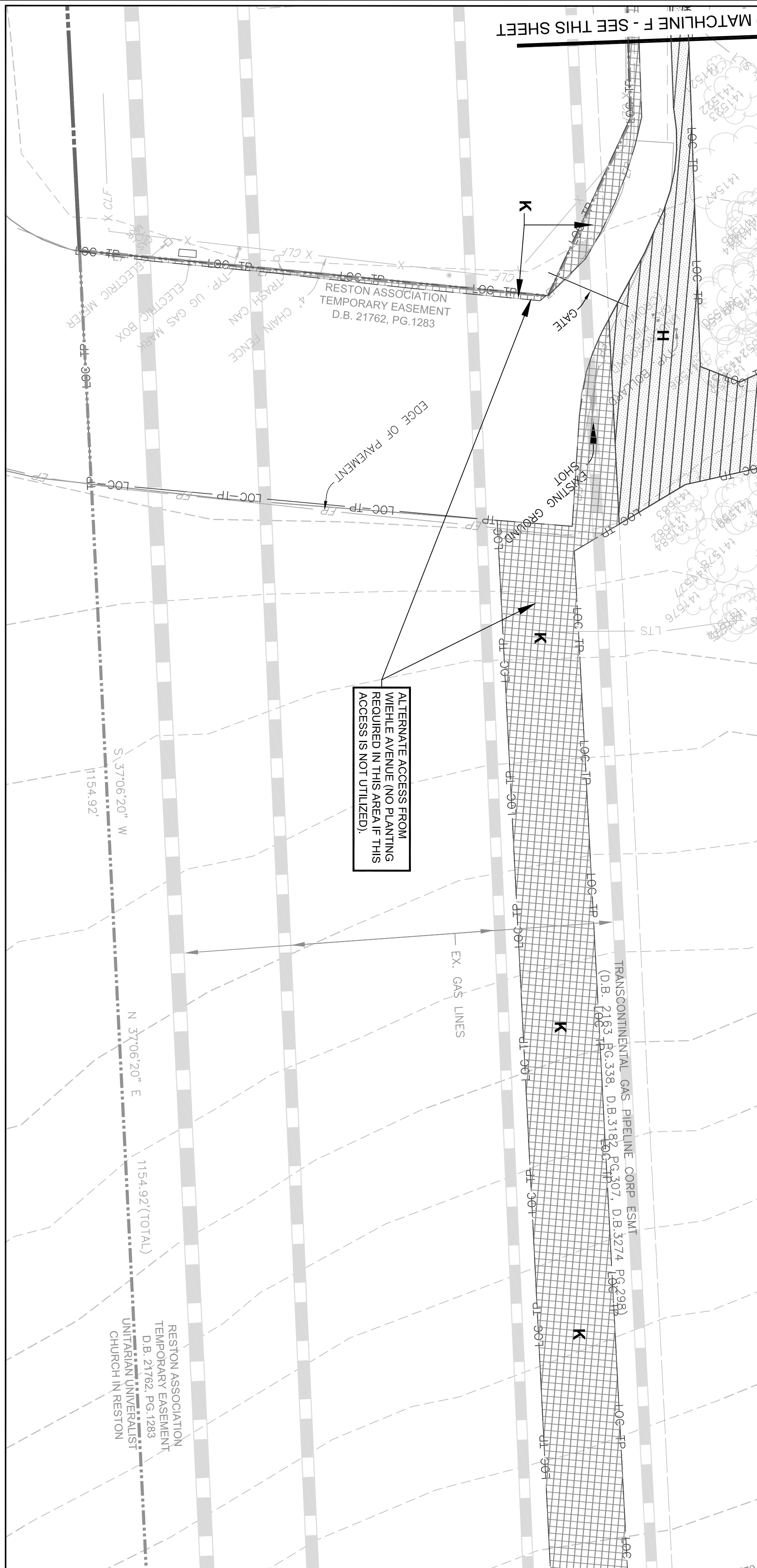
**THIS SHEET TO BE USED FOR PLANTING PURPOSES ONLY.**



PLANTING AREAS	SYMBOL
STREAMSIDE <sup>1</sup> 9,099 SF = 0.21 AC 2,529 LF	A, B
RIPARIAN FOREST <sup>1</sup> 84,368 SF = 1.94 AC	C, D, F, H <sup>2,3</sup>
RIPARIAN SEED MIX <sup>1</sup> 10,035 SF = 0.23 AC	E, J <sup>2,3</sup>
TURFGRASS SEED MIX 48,320 SF = 1.11 AC	G, K <sup>2,3</sup>

- 1 SEED MIX SHALL BE DISTRIBUTED EVENLY THROUGHOUT ALL DISTURBED AREAS IN THE AMOUNT SPECIFIED ON THE VEGETATION SCHEDULE SHEET.
- 2 AREAS H, J, & K SHALL NOT BE PLANTED UNLESS THE "ALTERNATE ACCESS" PATH IS UTILIZED.
- 3 IT IS NOTED THAT A PORTION OF THE PROPOSED WIEHLE SOUTH (SOUTH) PLANTINGS (HEREIN) OVERLAP PROPOSED WIEHLE NORTH (NORTH) PLANTINGS (UNDER SEPARATE COVER), SPECIFICALLY, AREAS D, F, G, H, J, & K ARE DUPLICATE, AND SHALL BE RESOLVED AS FOLLOWS:
  - A. IF NORTH IS BUILT PRIOR TO SOUTH, OR NORTH IS ELIMINATED, PLANT PER THIS PLAN (WIEHLE SOUTH) WITHIN THE SOUTH LIMITS OF DISTURBANCE.
  - B. IF SOUTH IS BUILT PRIOR TO NORTH, PLANT PER THIS PLAN WITHIN THE LIMITS OF DISTURBANCE, WITH THE EXCEPTION THAT TREE PLANTINGS SHALL NOT BE PLACED WITHIN AREAS D, F, & H (I.E. RIPARIAN SEED MIX ONLY). FULL RIPARIAN REFORESTATION/TREE PLANTING SHALL BE ACCOMPLISHED UNDER NORTH CONSTRUCTION TO AVOID TREE PLANTING IN FUTURE CONSTRUCTION AREAS.

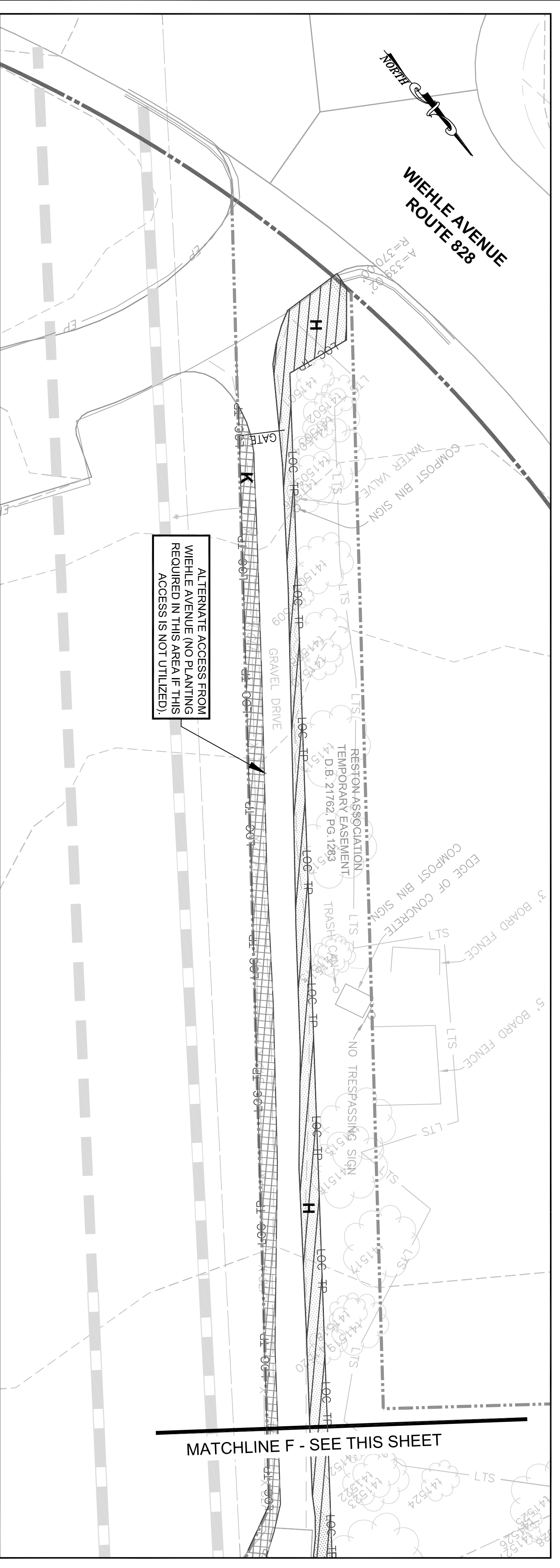
PLANTING LEGEND
— — — — — PROPERTY BOUNDARY
— — — — — COMBINED STREAM ESMNT AND TEMP. GRADING & CONST. / INGRESS-EGRESS ESMNT
— — — — — STREAM ESMNT
— — — — — TEMP. GRADING & CONSTRUCTION ESMNT. / INGRESS-EGRESS ESMNT
— — — — — EXISTING FLOODPLAIN ESMNT
— — — — — EXISTING SANITARY SEWER
— — — — — EXISTING CONTOURS (0.5')
— — — — — PROPOSED CONTOURS
— — — — — PROPOSED STREAM CENTERLINE
— — — — — PROPOSED TOP OF BANK
— — — — — LIMITS OF TREE SURVEY
— — — — — LIMITS OF CLEARING/TREE PROTECTION



ALTERNATE ACCESS FROM WIEHLE AVENUE (NO PLANTING REQUIRED IN THIS AREA IF THIS ACCESS IS NOT UTILIZED).

ALTERNATE ACCESS FROM WIEHLE AVENUE (NO PLANTING REQUIRED IN THIS AREA IF THIS ACCESS IS NOT UTILIZED).

MATCHLINE F - SEE THIS SHEET



ALTERNATE ACCESS FROM WIEHLE AVENUE (NO PLANTING REQUIRED IN THIS AREA IF THIS ACCESS IS NOT UTILIZED).

MATCHLINE E - SEE SHEET 17

REVISIONS				
No.	Date	Description	Rev. By	App. By

Horizontal Datum: VCS NAD 83  
Vertical Datum: NGVD 29  
Boundary and Topo Source: WSSSI and Fairfax Digital Data

Design	JTK	Draft	JTK
Approved	JTK	FRG	

DATE: AUGUST 2012      SCALE: 1"=20'



Northern Virginia Stream Restoration Bank  
Colvin Run - Wiehle South  
Fairfax County, Virginia

**Planting Plan (cont'd)**

Copyright © 2012 Wetland Studies and Solutions, Inc.

5300 Wellington Branch Drive, Suite 100 • Gainesville, VA 20155  
Phone 703 679 5600 • Fax 703 679 5601  
wetlandstudies.com